



Chart



Scan



From Anywhere

**Getting started** with the brand new

---

**TC2000 12.6**

## First things

Visit [www.TC2000.com](http://www.TC2000.com) and click the blue Download Software button in the TC2000 12.6 section.

Once the software has downloaded, follow the easy prompts in the install wizard.

Create your log-in credentials if you are new to TC2000 or sign-in using your TC2000 profile credentials if you already use TC2000.

That's it! You're ready to start exploring.

## What's new?

Windows Platform – Faster Charts, WatchLists & EasyScans – Live Briefs By MTNewswires – Built-in & Customizable Reports – Updated Drawing Tools & Controls – Consolidated Chart & Library Menus – Improved Alerts Menu – Filter Industry WatchLists by Sector – New Profile & File Menus – Various Performance Enhancements.

*Here's some of what you'll discover in this brand new version...*

A new Windows platform improves speed, performance and stability.

When you download the new platform you'll immediately experience the improved look, feel and performance of the desktop interface.

- Snappy charts that are quick and smooth to load
- WatchLists and columns that populate with no delays
- Symbol navigation that is instant in every time frame
- Displays that are crisp and clean with any chart settings



TC2000 12.6  
Latest, fastest version for  
Microsoft Windows.



Download Software

## The Live Briefs by MTNewswires service provides instant, professional-level news.

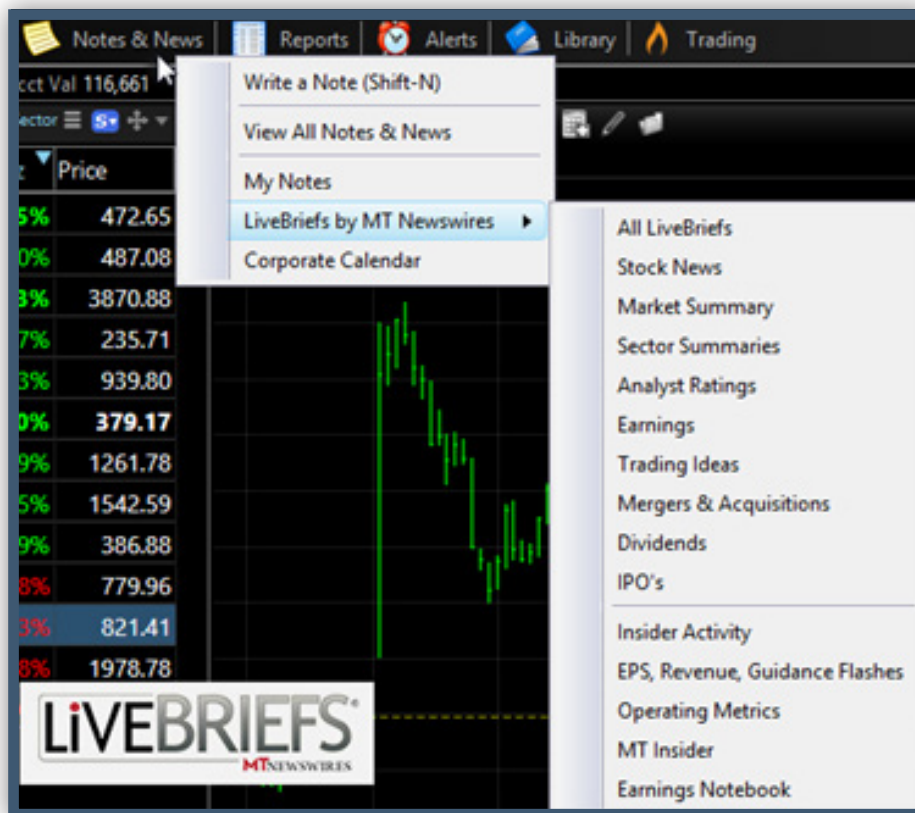
You can add the Live Briefs news feed to your TC2000 for fully integrated streaming news for each symbol in TC2000.

Add the Investor feed for:

- Simple, relevant news streaming on all symbols all day every day
- Immediate access to earnings, mergers & acquisitions and IPO's
- Current analyst ratings, and even trade ideas

Step up to the Pro feed and get:

- Instant Earnings, Revenue and Guidance flashes
- Insider activity and operating metrics
- Market commentary and economic data



## Fully customizable reports put the information you want at your fingertips.

Use pre-built reports or create and customize your own for instant access to the information you want on the stocks you follow.

- Pre-loaded fundamentals and price reports for every symbol
- Create your own reports for any stock with criteria important to you
- Customize the look and feel of reports to best suit your trading
- Save, edit and reuse as many reports as you need

Fundamentals	
Scana Corp	
Utilities Sector	
Utilities - Regulated Electric	
Cap	\$7.3B
Sales 1-Yr	\$4.8B
Book Val Share	37.26
Accumulated Depreciation and Depletion	\$4.1K
Asset Turnover	0.08
Cost of Sales	\$710.0M
Debt to Equity Ratio	1.04

New drawing tools and controls let you add your personal analysis to any chart.

The new drawing tools and interface makes chart notation even easier.

Easily forecast Fibonacci movement with the new Fibonacci Projection tool.



Always show the value of a horizontal line on your chart.



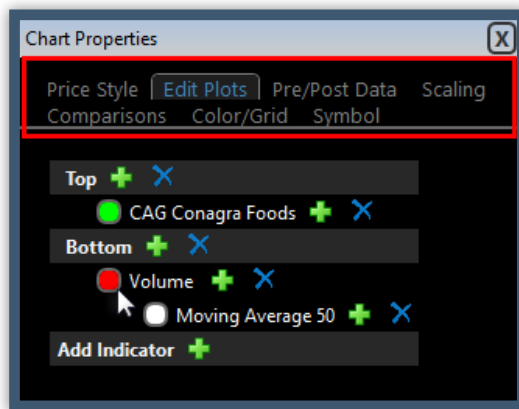
Maintain the slope of your trendline with the Ctrl key.



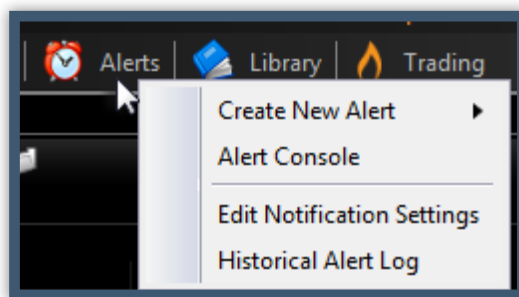
Erase all drawings from a chart in one click.

Drawing Boards		
Board	SCG	#Syms/ Drawings
<input checked="" type="checkbox"/> sym	0	1288/2202
<input type="checkbox"/> scratch	0	0/0
<input type="checkbox"/> All	1	1234/2487
<input checked="" type="checkbox"/> Show drawings		
<input checked="" type="checkbox"/> Only > 5.0% chart		
<input checked="" type="checkbox"/> Erase all		

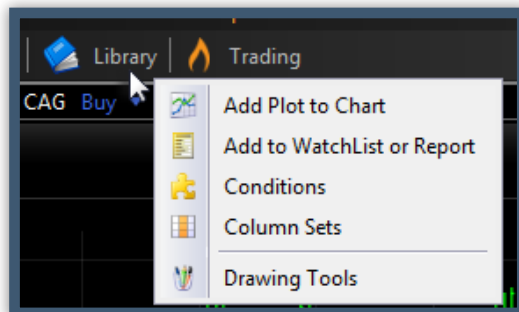
Menu updates consolidate your editing tools for quicker and easier changes.



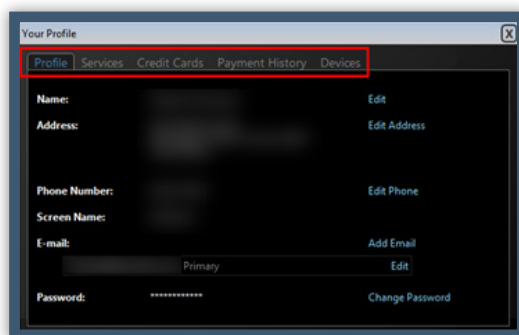
**Chart settings** – access all your chart editing tools from one convenient menu



**Alerts** – conveniently review your current and past alerts or set new ones



**Library** – an easier-to-use menu puts key tools in one drop down



**Profile** – edit your profile or payment information in one place

## Filter industries by sector to let you automatically see only related industries.

With one check mark instantly filter an Industry Index WatchList to those that share the same Sector.

Plus, we've done a lot of work behind the scenes to improve the overall performance of TC2000 to make your experience as a user smoother and easier. It's the stuff that you never see but it makes a real difference.

The screenshot shows a table titled 'Industry Indexes' with a filter 'by Sector' checked. The table contains the following data:

Flag	Sym	Company	% Change	Vol Buzz	Price
TV	iX1810	Food Distribution	-1.02%	+270.1%	2552.04
TV	iX1780	Education &	-0.69%	+251.2%	1509.98
TV	iX1710	Beverages - Brewers	-0.71%	+102.1%	1408.60
TV	iX1720	Beverages -	-0.19%	+65.0%	5736.18
TV	iX1770	Packaged Foods	+0.79%	+34.7%	1773.09
TV	iX1800	Pharmaceutical	+0.67%	+15.2%	2748.16
TV	iX1790	Discount Stores	-0.47%	+11.2%	3261.68

*For help getting started...*

800.776.4940

919.408.0542

Monday - Friday: 9am - 5 pm ET

Saturday: 10 am - 2 pm ET